



Online Library

User Guide

Table of Contents

Introduction	3
Tutorial.....	3
How do I access the library	3
What Library Links Are Available To Me?	6
How Do I Use the LIRN Services	7
How Do I Use the Scientific & Medical Art (SMART) Imagebase?	8
How Do I Use the Ask a Librarian Feature	9
What Is E-Book Library and How Can I Use It?	10
Search Tips	11

Introduction

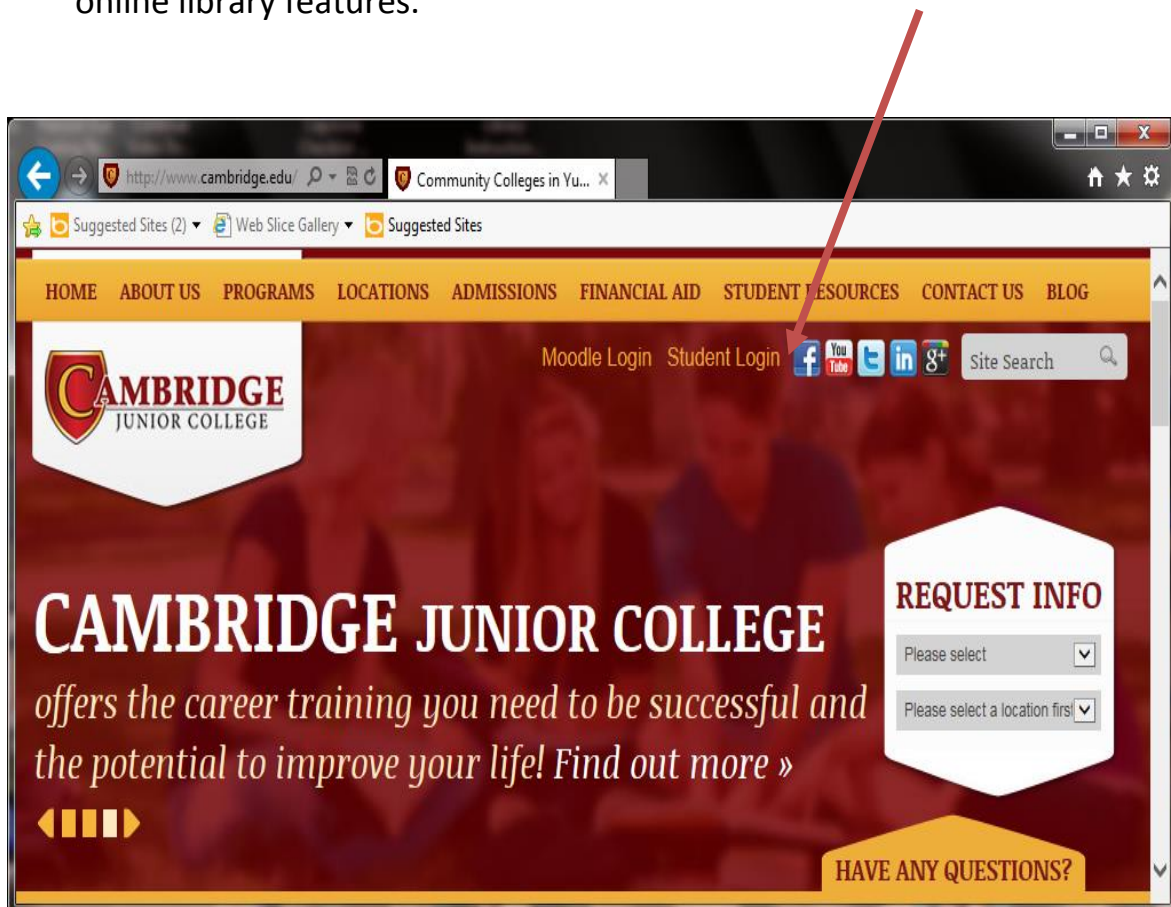
The document provides a step-by-step tutorial for use of the Cambridge Junior College online library feature. This feature can be accessed by current Cambridge Junior College students, staff, and administration.

Tutorial

1. How Do I Access the Library?

The online library can be accessed from the <http://www.cambridge.edu>.

Once on the website, click on the “Login” button to gain access to the online library features.



The following username/password screen appears. Your username is your full first and full last name (all lowercase, no hyphens or punctuation)
Example: John Morales-Gomez) would be "johnmoralesgomez". Your password is your four digit badge ID you use to clock in each day, (no space) Cambridge. If you have a 3 digit badge ID include a zero in front of the badge #. Example: Badge #: 350, password: 0350Cambridge.



HOME ABOUT US PROGRAMS LOCATIONS ADMISSIONS FINANCIAL AID STUDENT RESOURCES CONTACT US BLOG

Moodle Login Student Login Site Search

CAMBRIDGE JUNIOR COLLEGE
offers the career training you need to be successful and improve your life!

REQUEST INFO
Please select
Please select a location first

User account
Log in Request new password

Share 0 Tweet 0 +1 0

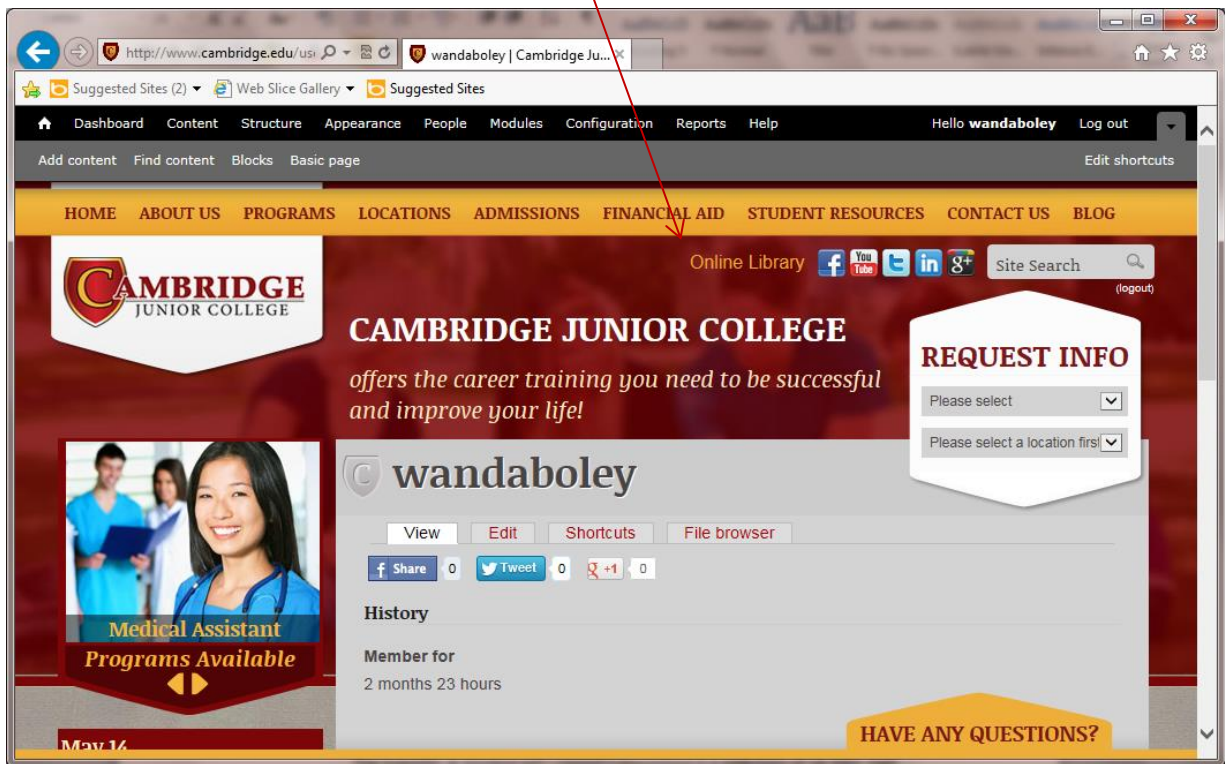
Username *
Enter your Cambridge Junior College username.

Password *
Enter the password that accompanies your username.

Log in

HAVE ANY QUESTIONS?

Click the Online Library button to continue:



The Cambridge Junior College library contains journals, news, a medical image base, valuable web links, and is staffed 24x7 by Librarians with Master's degrees to help you in your research! Please click the links below to explore our collection.

2. What Library Links Are Available To Me?

The following Links will be available for you:

Ask a Librarian – We're Online button

LIRN Services

The LIRN® virtual library provides students with millions of resources to support their academic studies.

Scientific & Medical ART (SMART) Imagebase

The *Scientific & Medical ART (SMART) Imagebase* is a collection of 18,500+ high quality illustrations and animations depicting anatomy, physiology, surgery, diseases, conditions, trauma, embryology, histology, and other health science topics.

SMART Imagebase users may download images for educational, non-commercial use in lectures, presentations, slide shows, web sites and more. Common types of visual presentations include PowerPoint™ shows, handouts, poster sessions, and interactive Flash animations.

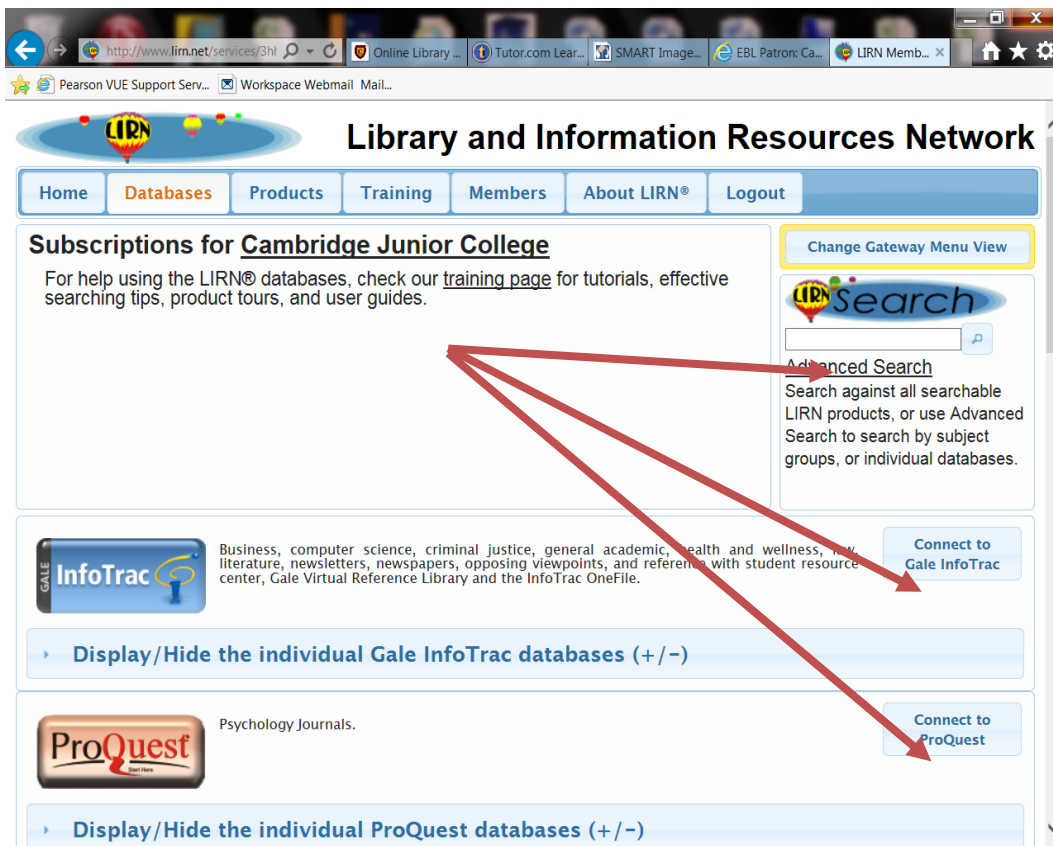
E-book Library

Access to e-books for medical, business and academic topics. When prompted enter your library logon and password to access these resources. Refer to page 10 for example.

3. How Do I Use the LIRN Services?

The LIRN Services contains ten databases compiling millions of resources. At the top of the page, a search function allows you to search all ten databases at the same time. Simply type in a subject and click “Quick Search.” You can also use the *Connect to LIRN Services* button to access a search offering more options.

Search all ten databases at the same time.



Library and Information Resources Network

Home Databases Products Training Members About LIRN® Logout

Subscriptions for Cambridge Junior College
For help using the LIRN® databases, check our [training page](#) for tutorials, effective searching tips, product tours, and user guides.

Search
Advanced Search
Search against all searchable LIRN products, or use Advanced Search to search by subject groups, or individual databases.

Gale InfoTrac
Business, computer science, criminal justice, general academic, health and wellness, law, literature, newsletters, newspapers, opposing viewpoints, and reference with student resource center, Gale Virtual Reference Library and the InfoTrac OneFile.
[Connect to Gale InfoTrac](#)

Display/Hide the individual Gale InfoTrac databases (+/-)

ProQuest
Psychology Journals.
[Connect to ProQuest](#)

Display/Hide the individual ProQuest databases (+/-)

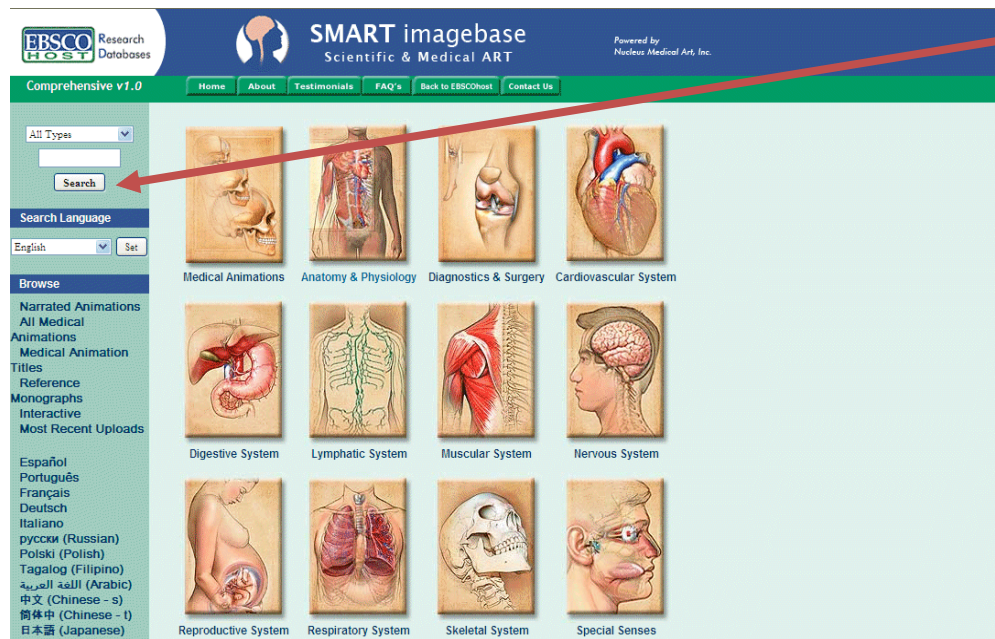
4. How Do I Use the Scientific & Medical ART (SMART) Imagebase?

The Scientific & Medical ART (SMART) Imagebase is a collection of 18,500+ high quality illustrations and animations depicting anatomy, physiology, surgery, diseases, conditions, trauma, embryology, histology, and other health science topics.

SMART Imagebase users may download images for educational, non-commercial use in lectures, presentations, slide shows, web sites and more. Common types of visual presentations include PowerPoint™ shows, handouts, poster sessions, and interactive Flash animations.

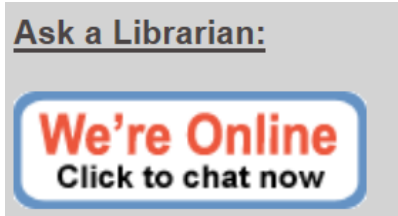
To find images, type a keyword or phrase in the search field at the upper left and click Search. You may also browse the images by Content Type, Body Systems, Body Regions or Medical Specialties.

To find images, type a keyword or phrase in the search field at the upper left and click Search.

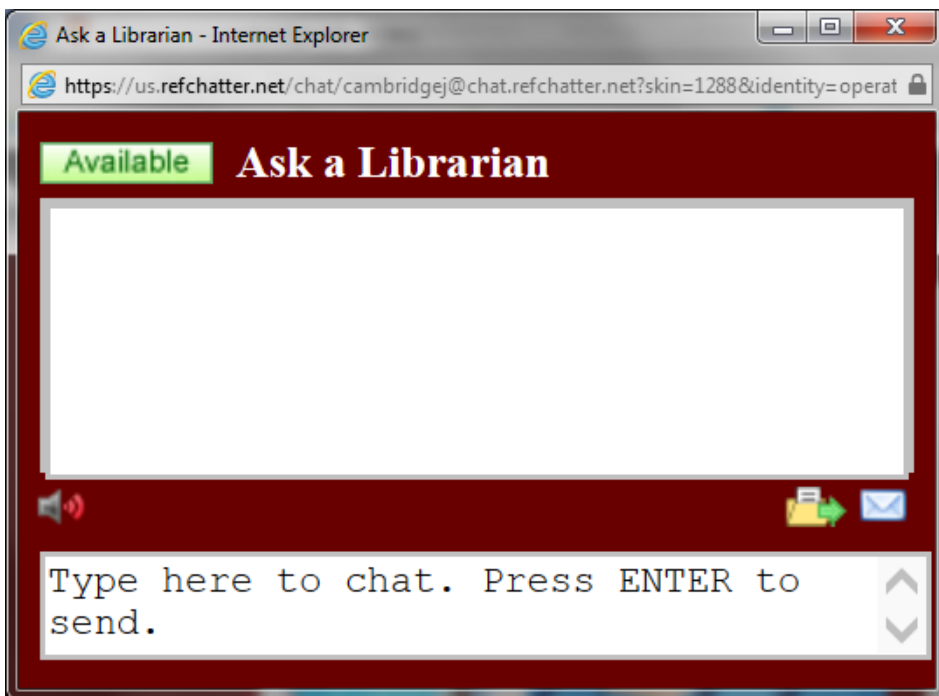


5. How Do I Use the Ask A Librarian Feature?

The “Ask a Librarian” feature gives students 24/7 access to a librarian for all their research needs. Click the following link on the main screen of the library.



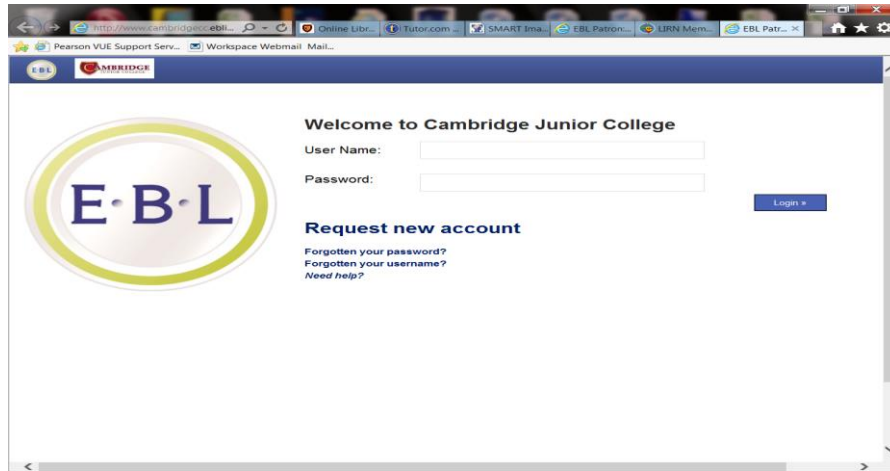
The student will need to enter their question and press enter to begin interacting with the librarian in the screen shown below.



6. What Is the E-Book Library and How Can I Use It?

The e-books library provides students access to e-books for medical, business and academic topics. Students can read these books online or download them to their computer for a period of time (i.e. check them out).


To gain access to the e-book library, click on the “E-book Library” hyperlink. The user will be guided to the following login screen:



Please note, you must login again onto this site for access to the Ebook library. Once you have logged in, you will be presented with the following screen: From the Ebook Library Home page, the user can search for specific books to read online or download. Searches can be performed the window on the top left:

It is recommended that the user read the Ebook Library User Guide – Version 0.5 that is available on the Ebook Library home page for additional details on downloading and printing. In general, All of the ebook titles on EBL have consistent usage permissions. For each title you have the following permissions:

Example:



New Collection...

Results per page: 10
 Sort by: Relevance Display: Basic
[Quick Search](#) | [Category](#) | [Full Text](#) | [Advanced](#)

Refine Your Search**Year Published**

[2012 \(1\)](#)[2011 \(8\)](#)[2010 \(15\)](#)[2009 \(2\)](#)[2008 \(9\)](#)
[2007 \(4\)](#)[2006 \(3\)](#)[2005 \(2\)](#)[2004 \(3\)](#)[2003 \(3\)](#)[2002 \(2\)](#)[2001 \(2\)](#)[1998 \(1\)](#)[Show more...](#)

Language

[English \(55\)](#)

Author

[Bragg, Steven M. \(3\)](#)[J. K. Lasser \(2\)](#)[Rodney Overton \(2\)](#)[Wempen, Faithe \(2\)](#)[Williams, Trenor \(1\)](#)
[Wright, Peter \(1\)](#)[Andress, Alice Anne \(1\)](#)[Bailey, Stephen \(1\)](#)[Bain, Barbara J. \(1\)](#)[Biafore, Bonnie \(1\)](#)[Bobrow, Jerry \(1\)](#)
[Bowell, Tracey \(1\)](#)[Brafman, A.H. \(1\)](#)[Rosenfield, Paul H. \(1\)](#)[Salisbury, Connie \(1\)](#)[Samarth, Anita \(1\)](#)
[Schoenborn, Barry \(1\)](#)[Shoup, Kate \(1\)](#)[Snyder, Richard \(1\)](#)[Sommers, Marilyn \(1\)](#)[Sompayrac, Lauren M. \(1\)](#)
[Steffan, B. \(1\)](#)[Strain, John \(1\)](#)[Stredwick, John \(1\)](#)[Thomson, Colin J. H. \(1\)](#)[Turk, Christopher \(1\)](#)[Show more...](#)

Category

[Business / Management \(21\)](#)[Medicine \(13\)](#)[Computer Science / IT \(9\)](#)[Social Science \(6\)](#)[Psychology \(4\)](#)
[Science \(4\)](#)[Law \(4\)](#)[Science: Anatomy / Physiology \(3\)](#)[Nursing \(3\)](#)[Science: Biology / Natural History \(2\)](#)[Literature \(2\)](#)
[Health \(2\)](#)[Philosophy \(2\)](#)[General Works / Reference \(2\)](#)[Education \(1\)](#)[Pharmacy \(1\)](#)[Mathematics \(1\)](#)[Home Economics \(1\)](#)[Show more...](#)

Select Page | Select All



Limit search to titles owned by your library

Results per page:

10

Sort by:

Relevance

Display:

Basic

Displaying **1 to 10** of **55** titles

7. Search Tips

Boolean Operators

And - combines search terms so that each search result contains all of the terms. For example, **education and technology** finds articles that contain *both terms*.

Or - combines search terms so that each search result contains at least one of the terms. For example, **education or technology** finds results that contain *either term*.

Not - excludes terms so that each search result does not contain any of the terms that follow it. For example, **education not technology** finds results that contain the term *education* but **not** the term *technology*.

Wildcard (?) and Truncation (*) Symbols

Use the wildcard and truncation symbols to create searches where there are unknown characters, multiple spellings or various endings. Neither the wildcard nor the truncation symbol can be used as the first character in a search term.

The **wildcard** is represented by a question mark **?** or a pound sign **#**.

To use the **?** wildcard, enter your search terms and replace each unknown character with a **?**. EBSCOhost finds all citations of that word with the **?** replaced by a letter. For example, type **ne?t** to find all citations containing **neat**, **nest** or **next**. EBSCOhost does not find **net** because the wildcard replaces a single character.

Note: When searching for a title that ends in a question mark, the symbol should be removed from the search in order to ensure results will be returned.

To use the **#** wildcard, enter your search terms, adding the **#** in places where an alternate spelling may contain an extra character. EBSCOhost finds all citations of the word that appear with or without the extra character. For example, type **colo#r** to find all citations containing **color** or **colour**.

Truncation is represented by an asterisk (*****). To use truncation, enter the root of a search term and replace the ending with an *****. EBSCOhost finds all forms of that word. For example, type **comput*** to find the words **computer** or **computing**. Note: The Truncation symbol (*****) may also be used between words to match any word. For example, a **midsummer*dream** will return results that contain the exact phrase, a *midsummer night's dream*.